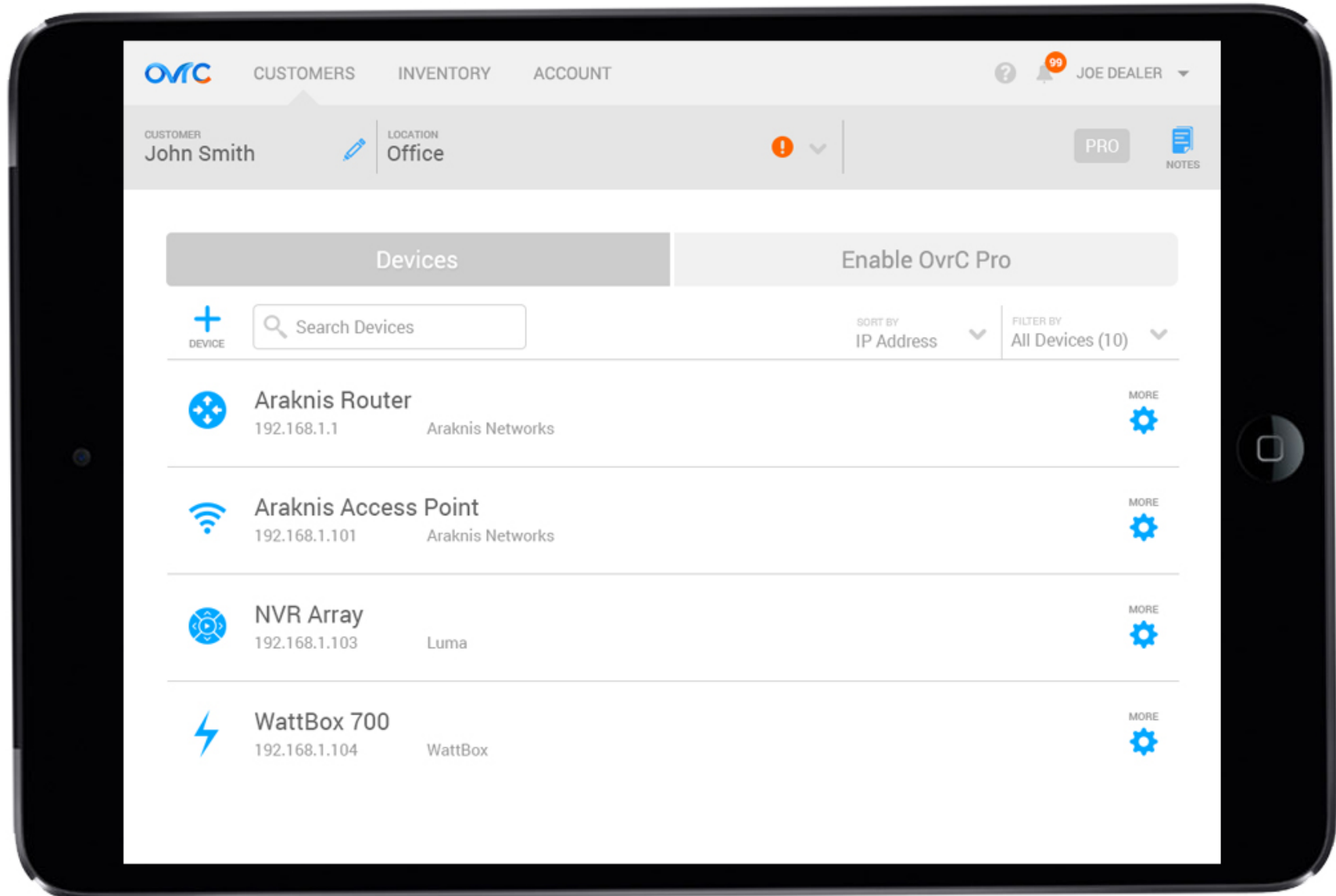




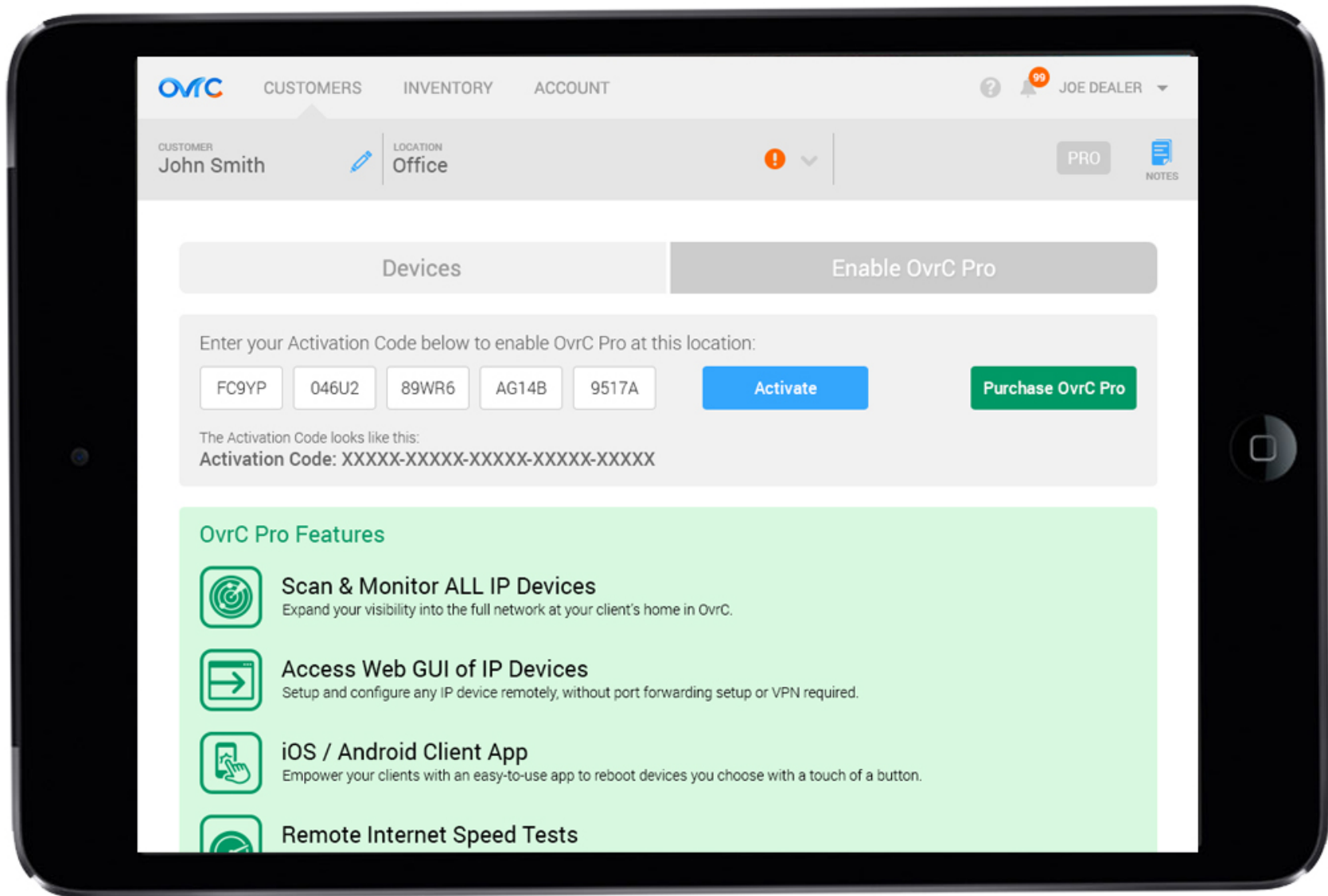
Platform Review



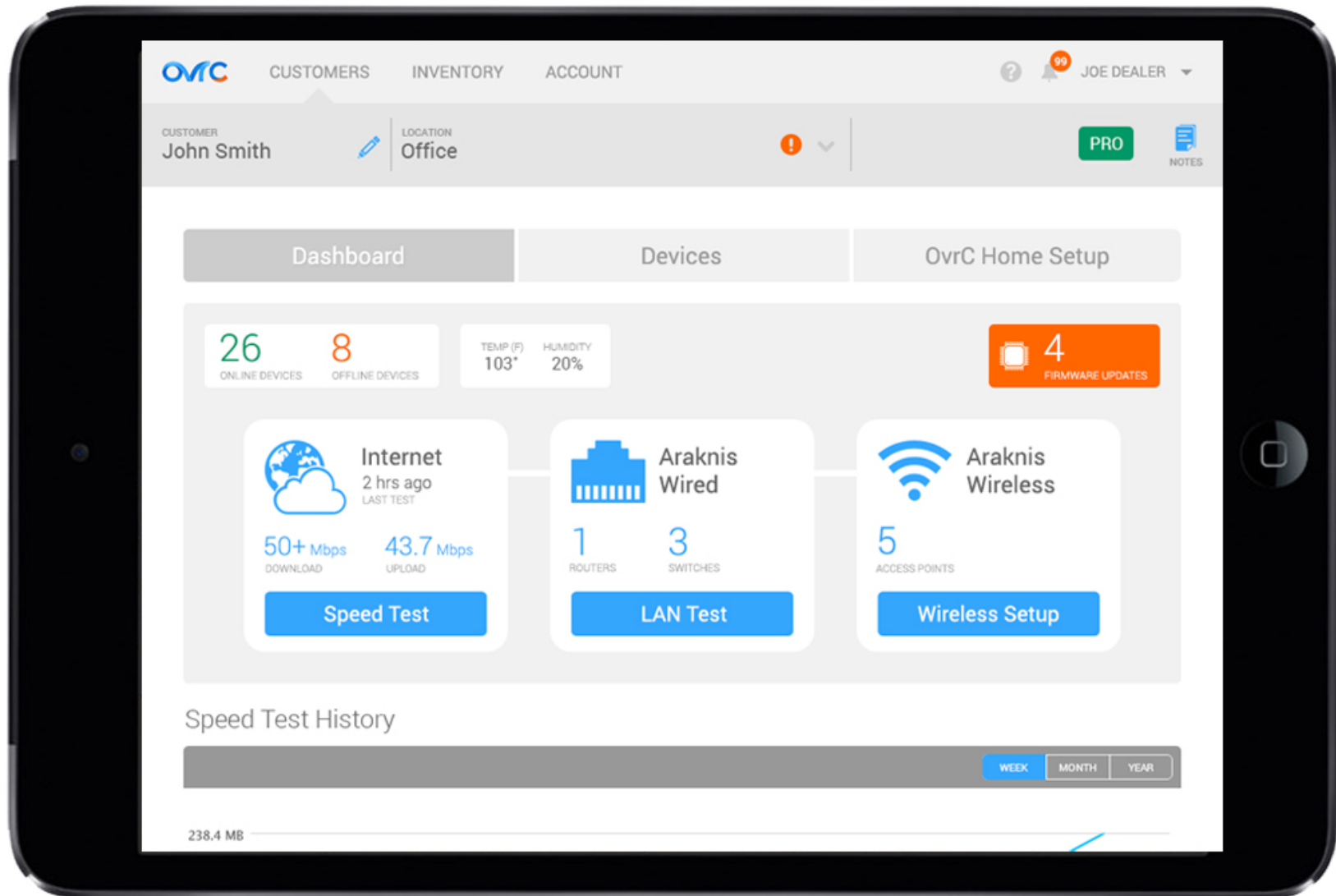
Within the OvrC app, integrators can see a full list of SnapAV devices they installed for all their customers. They can also enable 'OvrC Pro' for each customer's location.



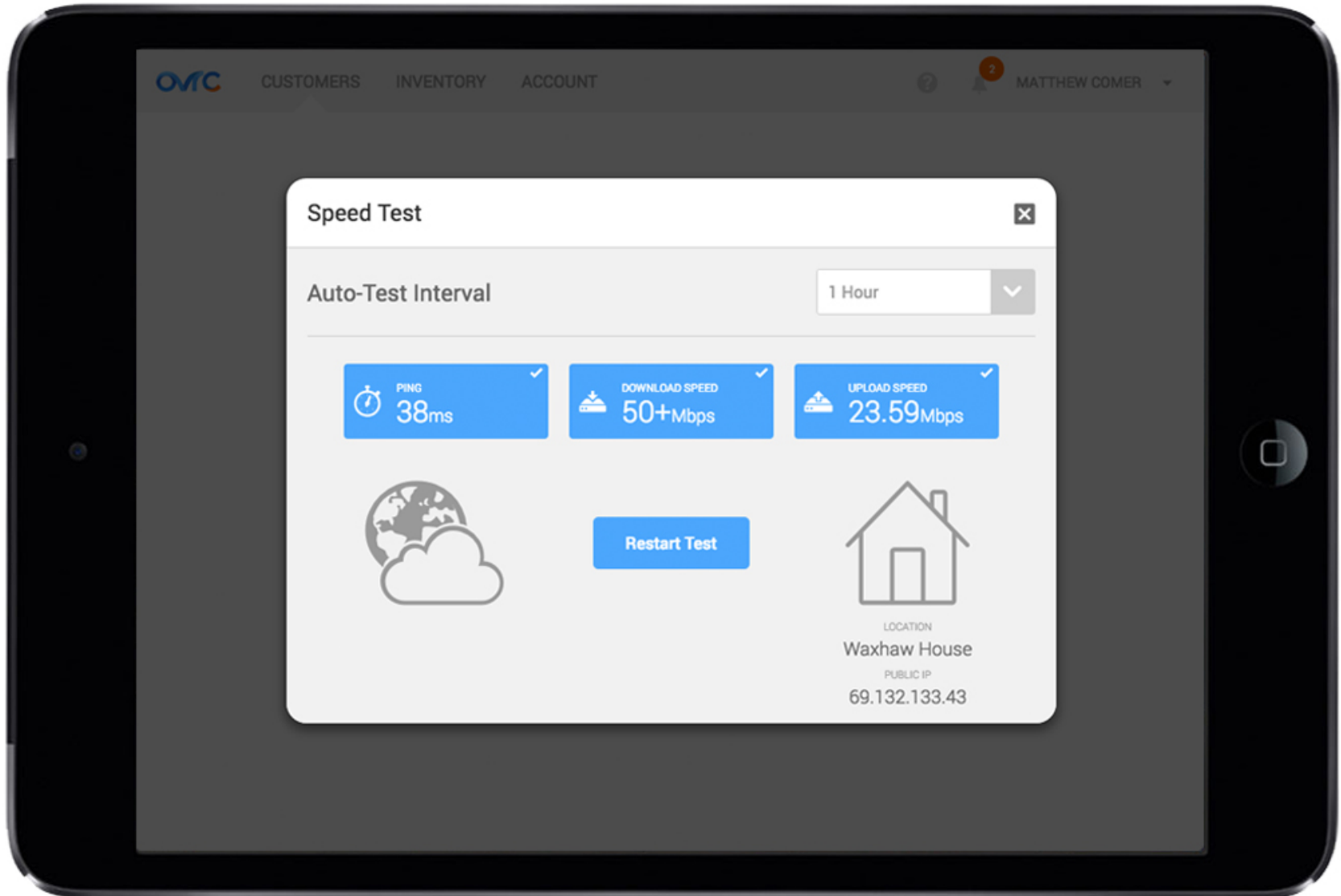
Integrators can easily enable OvrC Pro through the same interface that they are already using. Once enabled, integrators can start utilizing the many features offered within the OvrC Pro service.



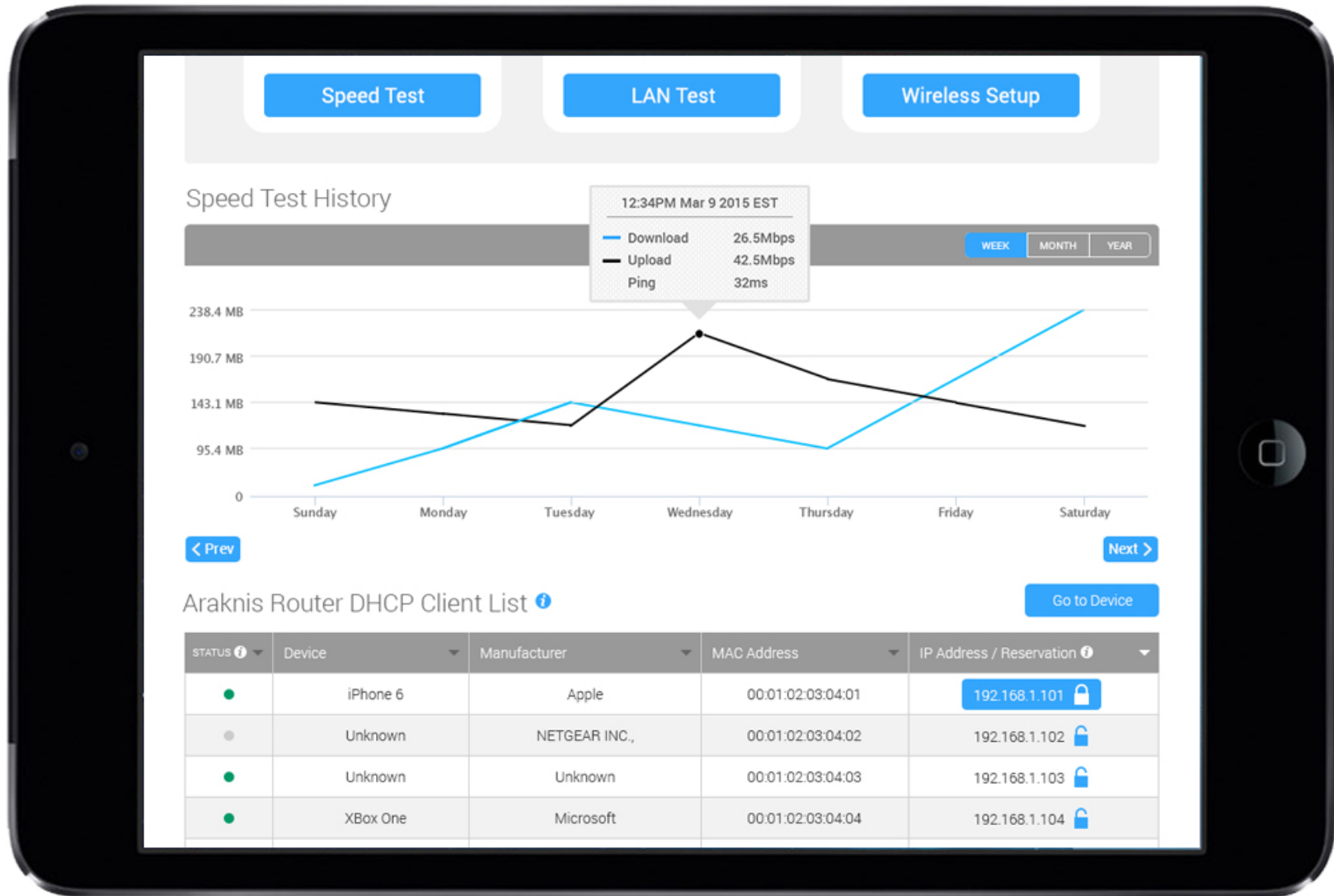
Enabling OvrC unlocks two new tabs called “Dashboard” and “OvrC Home Setup”. The Dashboard tab provides an overall network health status of a location, highlighting status information of internal and external networks. It also includes location-based capabilities, such as setting up WiFi networks across multiple access points.



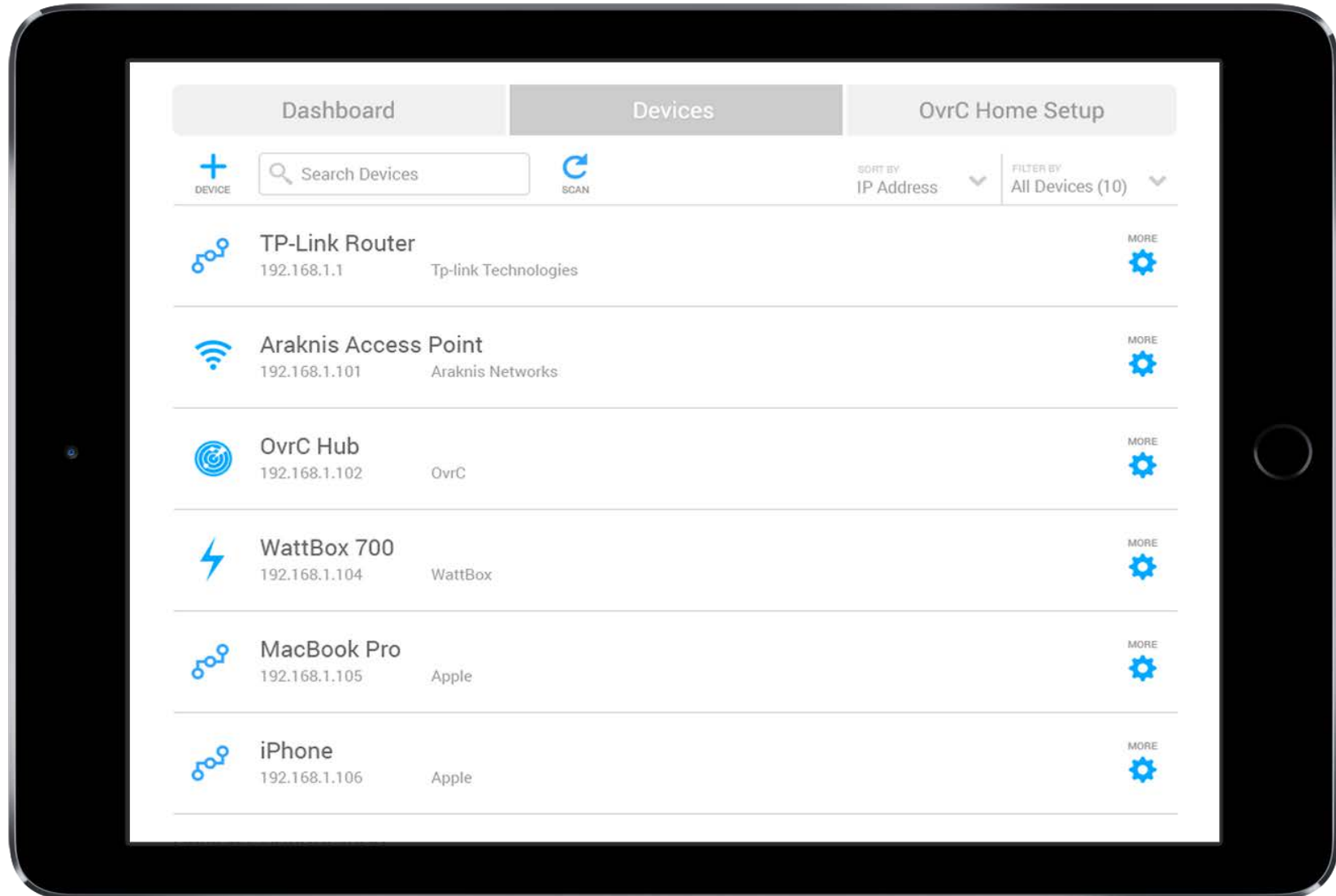
Integrators can run ISP speed tests ad hoc or on a periodic schedule remotely to troubleshoot complex networking issues at the customer's home.



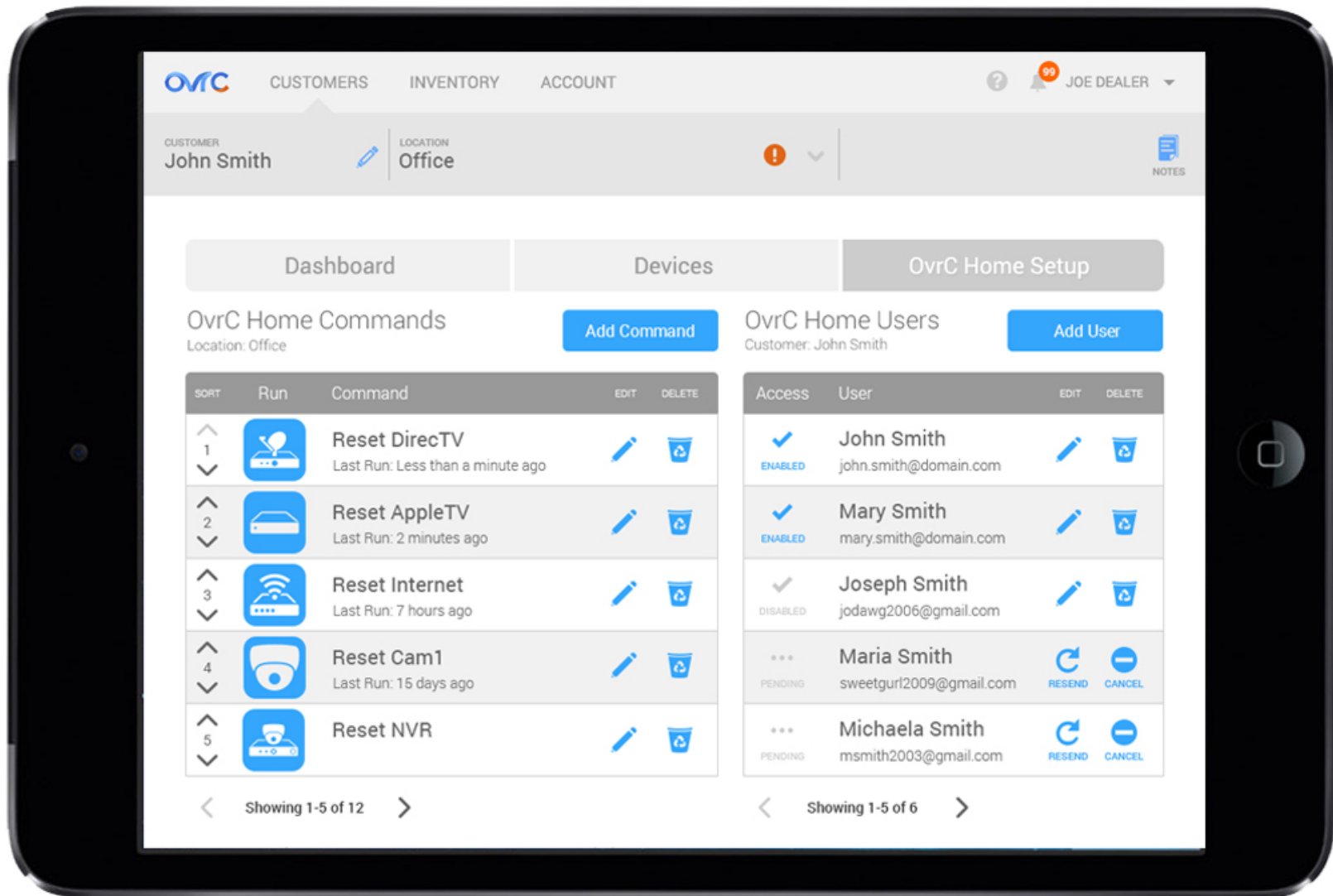
In addition, the Dashboard also includes a historical graph of the ISP performance and the list of all the devices on the network with associated information for easier troubleshooting.



On the “Devices” tab, the integrator will now be able to scan and monitor non-SnapAV products on the network. This gives integrators the ability to check connectivity, get IP information, ping for local connection health, and access local UI of the device (if it exists) through a secure method.



OvrC Pro also enables the “OvrC Home Setup” tab which is where integrators can customize and configure an end-user application called “OvrC Home” to provide to their customers. Integrators create ‘Commands’ to empower their customers to fix common issues through OvrC Home.



The OvrC Home allows the integrator to put a customized, powerful tool in their customer's hands, empowering them to fix common issues with a touch of a button. This minimizes calls and truck rolls for the integrator while providing customers a solution to minimize downtime if they can't get a hold of their integrator.

