



## Power Jumper IC™ SONOS Speaker Mount and In-Wall Power Solution

Utilizing the Power Jumper IC™ in-wall interconnect and the Speedport™ SC the SONOS Speaker Mount and In-Wall Power Solution is the perfect tool when installing wall mounted wireless speakers.

The Power Jumper IC™ in-wall interconnects provide easy power relocation that does not require an electrician. By simply inserting the two ends together and fastening with a strain relief bracket, power is secured within the wall and hidden from view.

The mounting solution is compatible with any 1/4-20 mounted speaker and will tighten both into the speaker and into the Speedport™ when fastened. Additional low voltage cables such as CAT5 can also be passed through the Speedport™.



### Low Profile Jumper

The interconnect easily feeds through 1" diameter holes and past other obstructions in the stud cavity.



Conforms to STD 514D and Certified CSA STD 22.2 No. 42.1-00  
Electrical Rating: 125 VAC, 15 AMPS, 60 Hz  
Meets UL 817 & CSA#22.2#21  
Interconnect meets UL 2256, 2459  
Meets NEC 2014 Article 400.7 (A)(11)  
Patented with multiple patents pending.

**Jumpers Also Available in 15', 25' and 40' lengths**



[www.midlite.com](http://www.midlite.com)

115 Wordell St. Fall River, MA 02721

Tel: 508.676.5169 / Toll Free: 800.606.5169 / Fax: 508.861.0105





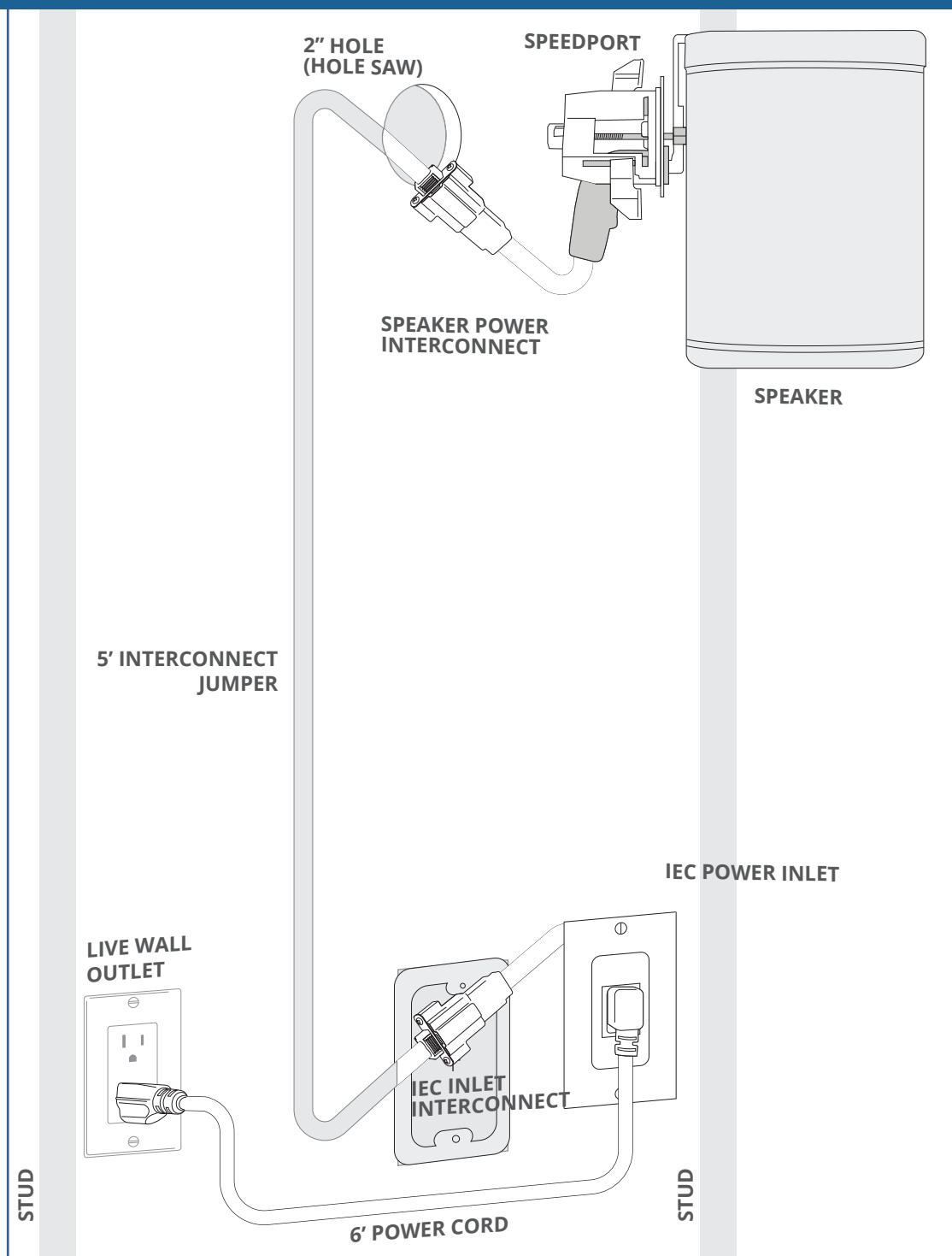
## Power Jumper IC™ SONOS Speaker Mount and In-Wall Power Solution

Installed View

Utilizing the Power Jumper IC™ in-wall interconnect and the Speedport™ SC the SONOS Speaker Mount and In-Wall Power Solution is the perfect tool when installing wall mounted wireless speakers.

The Power Jumper IC™ in-wall interconnects provide easy power relocation that does not require an electrician. By simply inserting the two ends together and fastening with a strain relief bracket, power is secured within the wall and hidden from view.

The mounting solution is compatible with any 1/4-20 mounted speaker and will tighten both into the speaker and into the Speedport™ when fastened. Additional low voltage cables such as CAT5 can also be passed through the Speedport™.



Conforms to STD 514D and Certified CSA STD 22.2 No. 42.1-00  
Electrical Rating: 125 VAC, 15 AMPS, 60 Hz  
Meets UL 817 & CSA#22.2#21  
Interconnect meets UL 2256, 2459  
Meets NEC 2014 Article 400.7 (A)(11)  
Patented with multiple patents pending.



[www.midlite.com](http://www.midlite.com)

115 Wordell St. Fall River, MA 02721

Tel: 508.676.5169 / Toll Free: 800.606.5169 / Fax: 508.861.0105

